

PINE RIDGE AT MARTIN DOWNS-VILLAGE I
 A PORTION OF MARTIN DOWNS A P.U.D.
 A PORTION THEREOF BEING A REPLAT OF A PORTION OF
 THE CLEVELAND ADDITION (P.B. 11, PG. 63)
 SITUATE IN SECTION 18, TOWNSHIP 38 SOUTH, RANGE 41 EAST,
 MARTIN COUNTY, FLORIDA.

SHEET 4 OF 4

I, LOUISE V. ISAACS,
 CLERK OF THE CIRCUIT
 COURT OF MARTIN COUNTY,
 FLORIDA, HEREBY CERTIFY
 THAT THIS PLAT WAS FILED
 FOR RECORD IN PLAT BOOK
 4, PAGE 18, MARTIN
 COUNTY, FLORIDA, PUBLIC
 RECORDS, THIS DAY
 OF 1985.

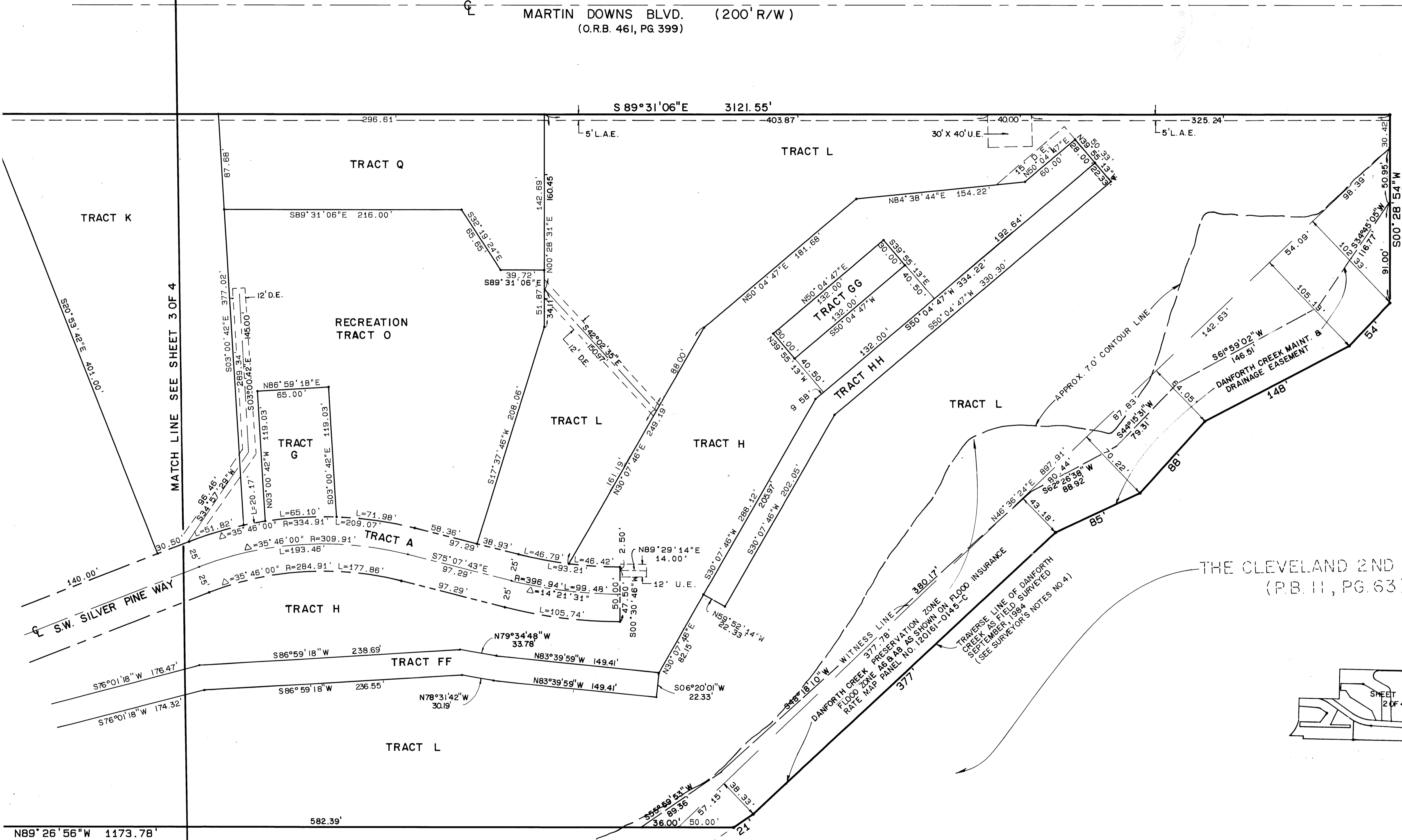
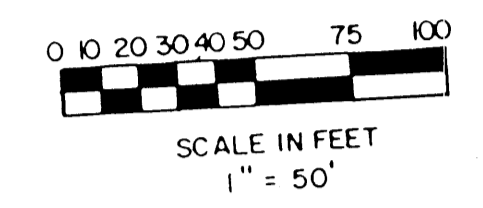
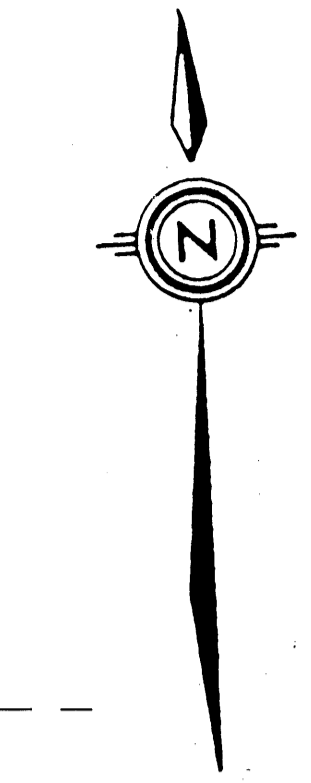
LOUISE V. ISAACS, CLERK
 CIRCUIT COURT
 MARTIN COUNTY, FLORIDA

BY: _____
 DEPUTY CLERK

FILE NO. _____

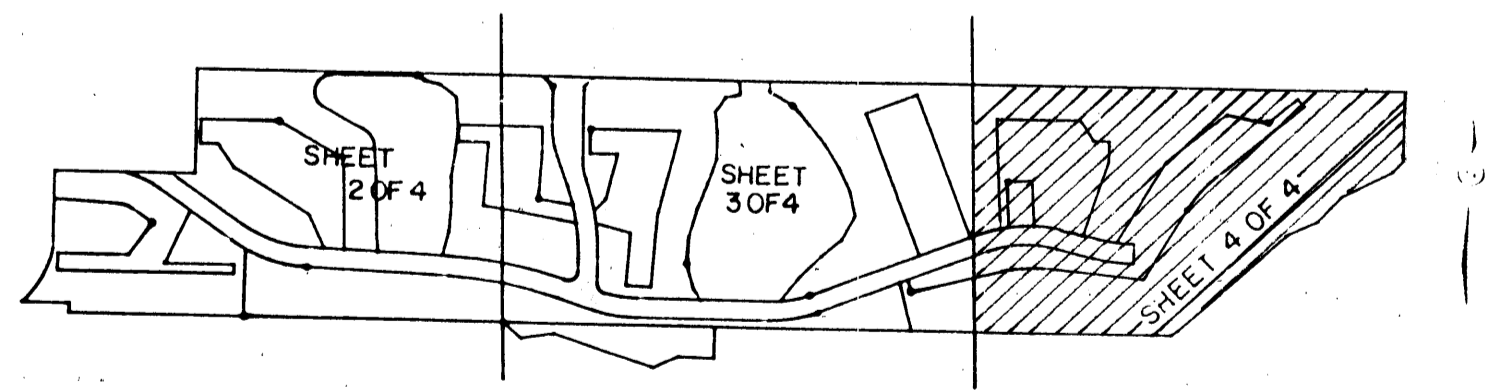
(CIRCUIT COURT SEAL)

NOTE: ALL SIGNATURES
 ON PLAT MUST BE IN INK.



NO.	DELTA	RADIUS	LENGTH
C1	19° 39' 15"	163.81'	56.19'
C2	71° 22' 26"	17.00'	21.18'
C3	71° 22' 26"	17.00'	21.18'
C4	181° 17' 40"	295.00'	94.19'
C5	108° 17' 35"	17.00'	32.13'
C6	19° 39' 15"	228.81'	78.49'
C7	56° 31' 13"	75.00'	73.99'
C8	150° 51' 35"	25.00'	65.82'
C9	4° 46' 24"	265.71'	22.14'
C10	4° 46' 24"	265.71'	22.14'
C11	3° 27' 00"	334.91'	20.17'
C12	2° 23' 28"	558.60'	23.31'
C13	6° 48' 49"	320.00'	38.06'

THE CLEVELAND 2ND ADDITION
 (P.B. 11, PG. 63)



Meridian Surveying and mapping inc. WEST PALM BEACH, FLORIDA

DRAWN MEH/DMW	DATE 3-4-85	PINE RIDGE AT MARTIN DOWNS - VILLAGE I
CHECKED	SCALE 1"=50'	
DRAWING NO 84-PI-079		